

Limeum fenestratum

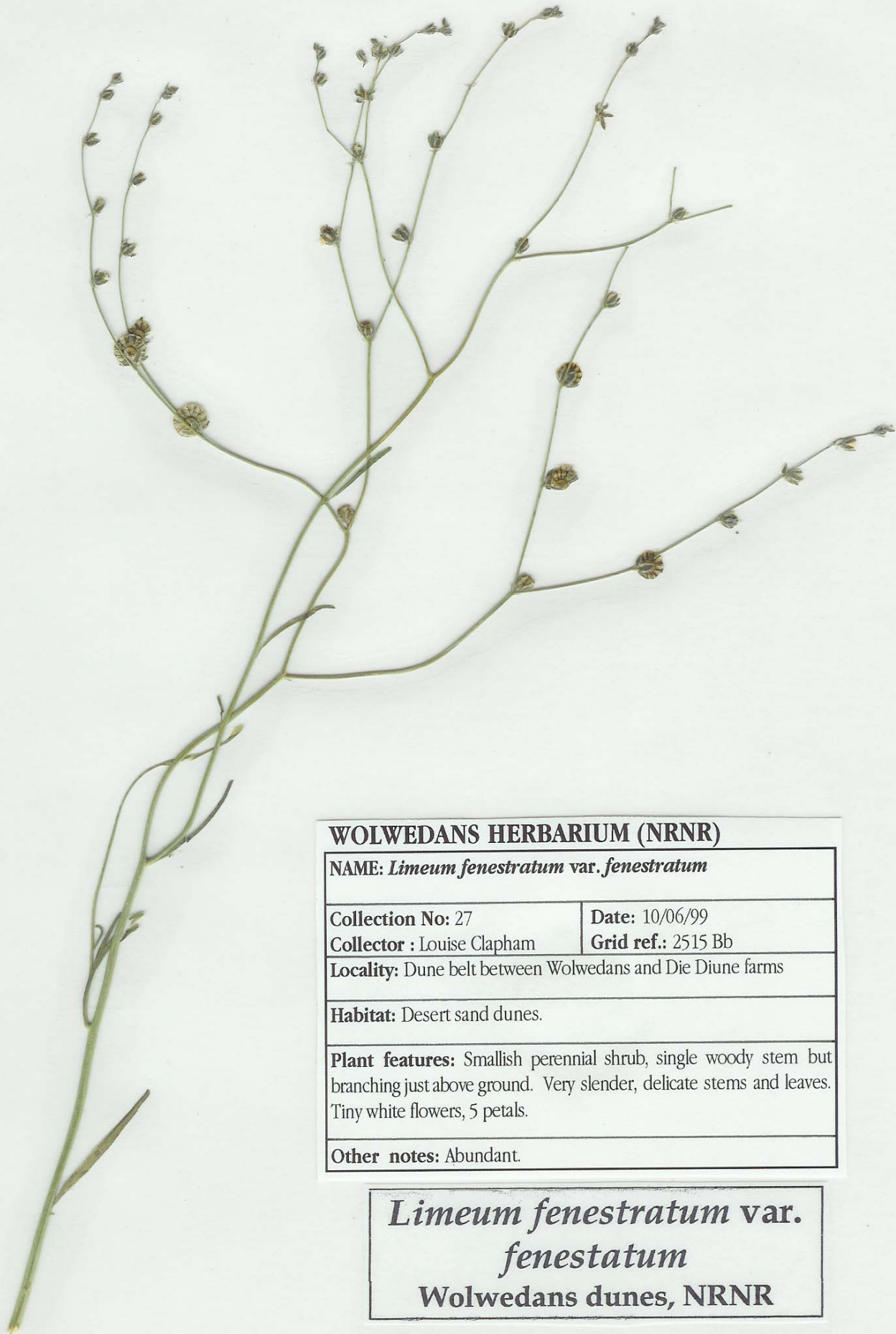
Family: Aizoaceae



Collection Number: 27

Description: A small shrub with a single stem but branching just above the ground. The overall appearance of the shrub is very slender and delicate. Leaves are linear, and very thin, simple and alternate. The white flowers are minute and have five petals. The fruit is a white disc, partly transparent so the seeds are visible through the plant tissue. Hence the name *fenestratum* meaning window.

Habitat: These shrubs are commonly found in the sand dunes.



WOLWEDANS HERBARIUM (NRNR)

NAME: *Limeum fenestratum* var. *fenestratum*

Collection No: 27

Date: 10/06/99

Collector : Louise Clapham

Grid ref.: 2515 Bb

Locality: Dune belt between Wolwedans and Die Diune farms

Habitat: Desert sand dunes.

Plant features: Smallish perennial shrub, single woody stem but branching just above ground. Very slender, delicate stems and leaves. Tiny white flowers, 5 petals.

Other notes: Abundant.

Limeum fenestratum var.
fenestratum
Wolwedans dunes, NRNR