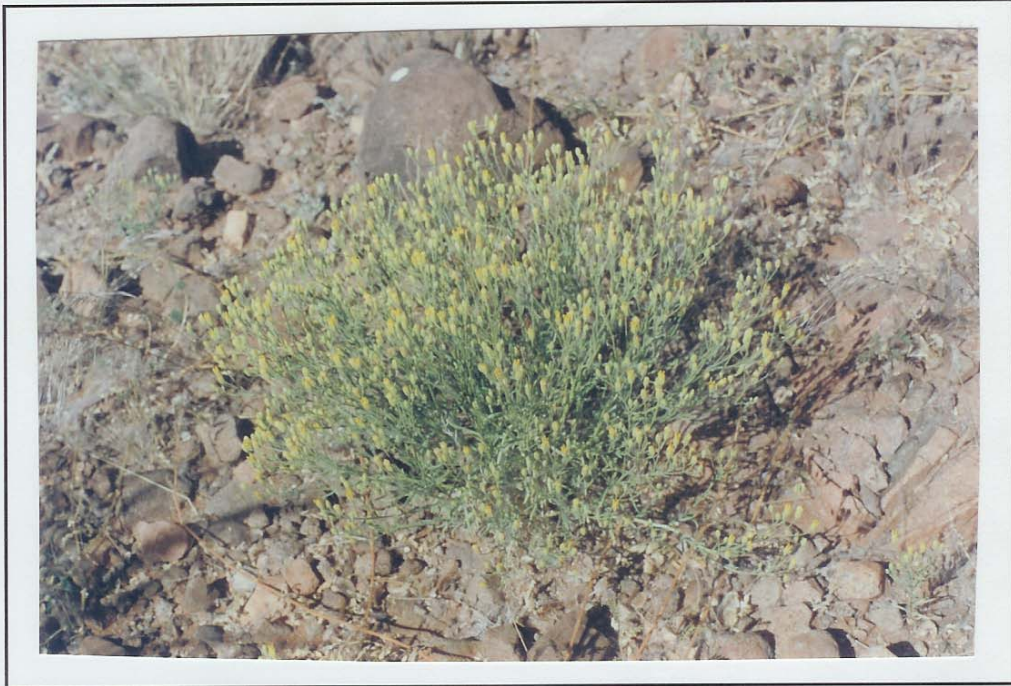


# *Pegolettia senegalensis*

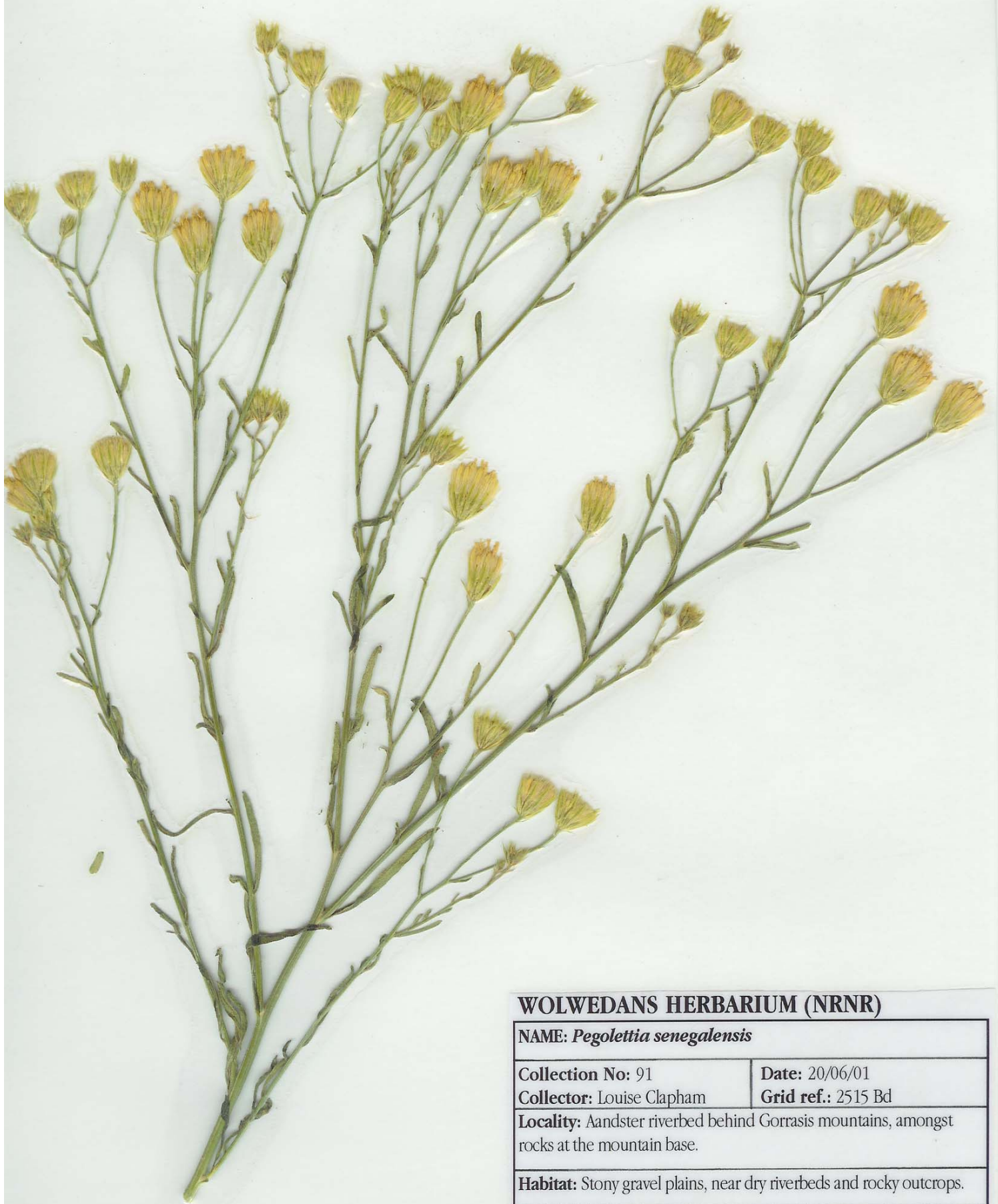
**Family:** Asteraceae



**Collection Number:** 91

**Description:** A small, dense shrub, growing to 30 cm, which is a light, bright green. It has a composite inflorescence made up of many tube-like flowers with fine, bright yellow petals. It remains bud-like and does not 'open out'. Leaves are simple, linear and margins entire. Stems and leaves are light, bright green and slightly sticky. The plant has a strong herbal scent. This plant grew in abundance after late summer rainfall (April) in 2001.

**Habitat:** Stony, rocky ground. It grows well on the south-east side of Gorrasis mountains, and sometimes on disturbed ground, such as around Wolwedans house.



**WOLWEDANS HERBARIUM (NRNR)**

**NAME:** *Pegolettia senegalensis*

**Collection No:** 91

**Date:** 20/06/01

**Collector:** Louise Clapham

**Grid ref.:** 2515 Bd

**Locality:** Aandster riverbed behind Gorrasis mountains, amongst rocks at the mountain base.

**Habitat:** Stony gravel plains, near dry riverbeds and rocky outcrops.

**Plant features:** Small, herbaceous shrub. Inflorescence a bright yellow capitulum of flowers, does not open fully. Leaves simple, linear, light, bright green., slightly sticky. Strong herbal scent.

**Other notes:** Very common.

## INDRI - Collection Data Form

Collectors No. 91 Date 20.06.2001  
 Collector/s Louise Clapham GPS S  
 Locality (please describe properly, not just grid/gps) Grandster river bed behind Gorrasis Grid 2515 Bd  
mountains, up in rocks at the mt. base Altitude   
 Aspect  Slope med - gentle Exposure full sun Photo no's   
 Voucher for

DESCRIPTION OF PLANT *Please give as much information as possible*

Species Related to wild sage? *Pegolobbia senegalensis?* Perennial/Annual   
 Habit (eg: dwarf shrub) Small, fairly dense shrub  
 Height ± 30 cm Occurrence (eg: common) Very common locally  
 Flower/Inflorescence (colour, shape, size, smell, texture) Yellow, inflorescence  
Flowers are long + slim, many fine petals. Inflorescence  
remains 'bud-like', does not appear to open out.

Leaves (simple/compound, margin, shape, colour, texture, stipules)

Simple, linear, margins entire. Light, bright green.

Stems and bark (colour, texture, habit - eg: erect stem with yellow peeling papery bark - presence or absence and smell of sap or latex - eg: milky latex with unpleasant smell)

Light bright green, slightly sticky. Strong herbal smell,  
Similar to wild sage. ~~Slightly~~

Fruits and seed (presence/absence, shape, colour, edibility and taste if edible, single or clustered, maturity) Not yet

Roots/Underground organs (shape, texture, colour, size)

Other (eg. uses, ecology)

Indigenous names and languages

Habitat		Substrate	Soil type	Moisture	Biotic effect
cliff face	<del>riverbank</del> streambank	soil	sand		road/railside
mountain/hill peak	seepage area	stony/rocky soil	sandy loam	well-drained ✓	cultivated land
mountain/hill slope	waterfall/ rapids	gravel	loam	seasonally waterlogged	abandoned land
cavine/kloof/ gorge	littoral	termite mound	humus- rich	permanently waterlogged	heavily grazed
talus/scree	unknown	bare rock	loamy clay	moist/damp	garden
dune slope		water	clay	freestanding water	plantation
dune crest	Vegetation	roots	calcrete	running water	recently burnt
interdunal street	desert	other	black turf	mist/fog	disturbed - other
ridge	shrubland ✓ open/closed		salt/brack		other
rocky outcrop	woodland open/closed		gravel		
plain	thornbush savanna		dolomite		
plateau	forest		granite		
valley	grassland		lime		
donga/ditch/gulley	karoo		mica schist		
depression/ pan			quartzite		
dam			other		
dry bed of river/stream					
floodplain					
estuary/lagoon					
marsh/swamp/ wetland					
river/stream					

FOR HERBARIUM USE ONLY

D.....

Det. By..... date..... Accession.....

flowering code		fruiting code	voucher		duplicates
	mature		genebank		
	immature		ethnobotanic		
	remains				
	absent				

DATE: late

Collector: Leslie Clapham No.: 46

Provisional name<sup>1</sup> Wild Sage

LOCATION:

Region<sup>2</sup> Maltanole Grid ref.<sup>3</sup>

Major<sup>4</sup> Namib Road Native Reserve Alt. m/ft

Minor<sup>5</sup> Drachbeck farm Relevé

Precise<sup>6</sup> Close to public road 326

HABITAT:

Vegetation type<sup>7</sup> Desert, grassland

Substrate<sup>8</sup> stony/rocky soil Moisture regime<sup>9</sup> well drained

Soil type<sup>10</sup> gravel/sand Lithology<sup>11</sup>

Exposure<sup>12</sup> full sun Aspect<sup>13</sup> Slope<sup>14</sup>

Biotic effect<sup>15</sup> Disturbed ground - grass in old gravel pit and

Other<sup>16</sup> next to roads along dry water courses

PLANT FEATURES<sup>17-24</sup>

Plant height , m

4 large, multi-stemmed shrub very strongly scented. not un-pleasant. ~~flavoured~~

NOTES<sup>25-31</sup>

Local abundance<sup>25</sup> infrequent

No fruit or flowers when collected. Please advise if the sample and information are insufficient.

HERBARIUM USE ONLY

Name of plant

Genspec

Det. Date No. of labels

FLOWERS: Present  Absent  FRUIT: Present  Absent

SEEDS: Present  Absent  TYPE SPECIMEN: Yes  No

SPECIMEN STATUS: Essential  Keep  Return  Discard

DUPL. DIST.